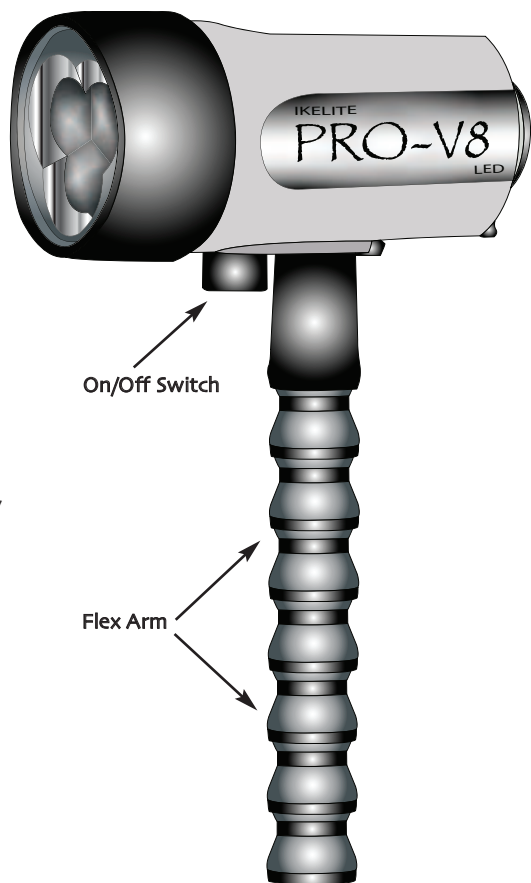


# PRO-V8 LED VIDEO LITE

#6320

The Ikelite Pro-V8 LED Video Lite uses the most sophisticated LED technology currently available to deliver a level of performance previously unavailable in a light of this size. Three 5-watt LEDs provide a shockingly bright, even beam for 10 hours or more with no waning effect. The light runs cool and is usable above or below water with the same intensity for the same burn time.

The rear clamp design assures easy opening and dependable resealing. Virtually indestructible casing. Rubber shroud protects the front lens while blocking side reflections. Large rotating switch and sliding lock afford easy operation even when wearing a bulky glove. Nickel-plated brass contacts boost the electrical efficiency and corrosion resistance. Waterproof to 90m (300 feet).



## NOTES:

### LED Bulbs

Due to the extended life expectancy of LED bulbs, the light head assembly has been factory sealed. If bulb failure does occur, the light should be returned to Ikelite.

### LED's Flicker

When the batteries are nearly depleted the light will flicker, if left on for a few minutes the flickering will stop, but each time the light is turned off and on the light will flicker. This is a good indication that the batteries should be replaced.

### Flex Arm Pop-Beads

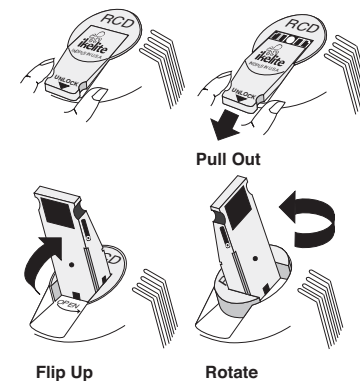
Your Pro-V8 Flex Arm utilizes a pop-bead system which allows easy repositioning of the Pro-V8 Lite while underwater. The pop-beads are designed to allow nearly effortless lite repositioning during a dive. On land, the pop-beads may not support the full weight of the Pro-V8 lite with batteries installed. Also, after extended use, the pop-beads will loosen slightly. This should not be a problem underwater, however replacement pop-beads are available for purchase: #9350.44 (4 pop-bead extension).

## OPENING THE Pro-V8 LITE

The unique flip-lock lever makes opening and closing incredibly easy and dependable.

Simply extend the locking lever, flip it up, and rotate. The internal spring automatically pushes open the light for easy battery replacement. Flip the locking lever down and the Pro-V8 seals with ease and confidence.

- Place light face down on flat surface.
- Pull out on the locking lever.
- Flip the lever up.
- Rotate the lever counter-clockwise 90° and the internal spring automatically pushes the light Open.
- Lift the body off of the front. The batteries remain housed in the holder.



## O-RING

Keep the o-ring and sealing surfaces clean. DO NOT stretch the o-ring when cleaning. It is not necessary to lubricate the o-ring. Never use spray lubricant because it will crack the plastic.

Place the clean o-ring on the inner recess of the front head assembly.

Do not dent or damage the front edge of the lite body as the o-ring seals against this surface.

## CLOSING THE Pro-V8 LITE

- Make sure the on/off switch has been rotated left to the off position.
- Place the front lens face down on a flat surface. Check that the o-ring and sealing surfaces are clean and undamaged; make sure the o-ring is positioned properly on the inner recess of the front.
- Place locking lever in the open position (pull out, flip up, and rotate lever).
- Align the handle on the body with the handle reference on the battery holder. Lower the body over the batteries. Proper alignment of the body with the front is extremely important to avoid possible damage to the internal components.
- To seal the light, simply reverse the opening sequence. Press down slightly on the body and rotate the lever clockwise. Push the lever down and slide the lever in to the locked position.

## ON/OFF SWITCH

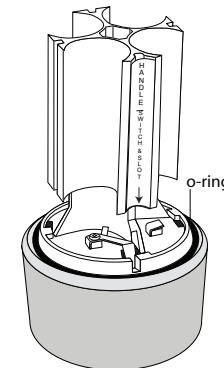
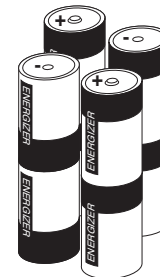
The large rotating switch with sliding lock is easily operated with one hand. Unlock the switch by sliding the white-colored lock down. Rotate the switch fully to the right to turn the light ON.

Rotate the switch to the left to turn the light OFF. To lock the switch, slide the white lock upward towards the light body. Lock the switch when the light is not in use.

## BATTERY INSTALLATION

Accepts eight C-cell batteries, alkaline or NMHi. Alkaline batteries provide 15W initial intensity and 10 hours of high intensity light.

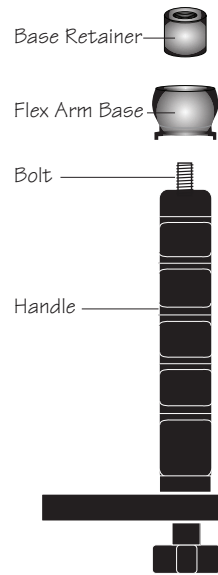
- Note the polarity markings at the base of the battery holder assembly.
- Follow the polarity markings when installing two batteries in each of the four columns. Make sure that both batteries in each column have the same polarity direction.



FOR BEST RESULTS, USE  
QUALITY ALKALINE BATTERIES

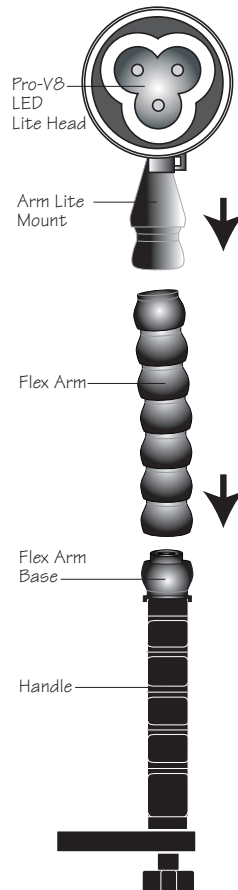
## MOUNTING THE FLEX ARM BASE TO HOUSING HANDLE

The Flex Arm can be mounted to the top of the handles on Ikelite Video housings. Remove the wingnut and washer from the top of either handle. Place the Flex Arm Base over the bolt protruding from the top of the handle. The bottom of the Flex Arm Base is slotted to fit over the handle to eliminate rotation. With the handle bolt protruding through the Flex Arm Base, secure the Flex Arm Base to the top of the handle by screwing the black knurled Base Retainer onto the handle bolt.



## PRO-V8 LED VIDEO LITE & FLEX ARM

The Pro-V8 video light comes with the Flex Arm Lite Mount already in place. The Flex Arm Lite Mount is secured to the Lite Head by a mounting bolt that can be accessed through the center opening of the Flex Arm. The Flex Arm Lite Mount can be removed for cleaning or packing.



## ATTACH THE FLEX ARM TO THE PRO-V8 LITE

To secure the Flex Arm to the Pro-V8 Lite align the bottom of the Flex Arm Lite Mount with the Flex Arm and push the two components together until they snap into place.

## ATTACH FLEX ARM TO HANDLE

To secure the Flex Arm to the handle, align the bottom of the Flex Arm over the Flex Arm Base and push the two components together until they snap into place. The Lite Head can now be adjusted to multiple positions for optimal lighting.

## REMOVING FLEX ARM FROM HANDLE

To remove the Flex Arm and Lite Head from the housing handle, grasp the Flex Arm just above the Flex Arm Base on the top of the handle and bend the Flex Arm until it pops off the Base.

## MAINTENANCE

1. We suggest storage of your lite with the locking lever OPEN to allow any potential hydrogen/air mixture to escape.
2. The front edge of the lite body and the inner recess in the front assembly are the sealing surfaces. DO NOT allow these surfaces to become damaged.
3. Keep the o-ring and sealing surfaces clean. DO NOT stretch the o-ring when cleaning. It is not necessary to lubricate the o-ring. Never use spray lubricant because it will cause cracking of the plastics.
4. Occasionally clean the metal contacts for a better connection.
5. The front head assembly has been factory sealed; DO NOT disassemble.

## CAUTION

DO NOT use batteries that have been wet; batteries from a flooded lite should be discarded. Water could create an internal short circuit at some later date causing a potential explosion. The normal evolution of all batteries is emitting hydrogen gas. This gas must be absorbed or allowed to escape to prevent ignition of the entrapped hydrogen/air mixture. We suggest storage of your lite open to allow any hydrogen/air mixture to escape.

## REPLACEMENT PARTS

0124	Main seal o-ring
0522	Rubber shroud

## LIMITED WARRANTY

All Ikelite products are warranted against any manufacturing defects for a period of one year from the original date of purchase. Defective products should be returned prepaid to Ikelite. Ikelite will, at its discretion, repair or replace such products, and will return to customer prepaid. All other claims, of any nature, including but not limited to bulb failure are not covered. Except as mentioned above, no other warranty expressed or implied, applies to this Ikelite product.



### IKELITE UNDERWATER SYSTEMS

50 West 33rd Street  
PO Box 88100  
Indianapolis, IN 46208 USA

317-923-4523

[www.ikelite.com](http://www.ikelite.com)  
Email [ikelite@ikelite.com](mailto:ikelite@ikelite.com)