

Ikelite C-Lite 8 LED

i n s t r u c t i o n m a n u a l



The Ikelite C-Lite 8 LED uses the most sophisticated LED technology currently available to deliver a level of performance previously unavailable in a light of this size. Three 5-watt LEDs provide a shockingly bright, even spot beam for 10 hours or more with no waning effect. The light runs cool and is usable above or below water with the same intensity for the same burn time.

Rubber coated pistol grip handle featured for comfortable exploration night or day.

The rear clamp design assures easy opening and dependable resealing. Virtually indestructible casing. Rubber shroud protects the front lens while blocking side reflections. Large rotating switch and sliding lock afford easy operation even when wearing a bulky glove. Nickel-plated brass contacts boost the electrical efficiency and corrosion resistance. Waterproof to 90m (300 feet).

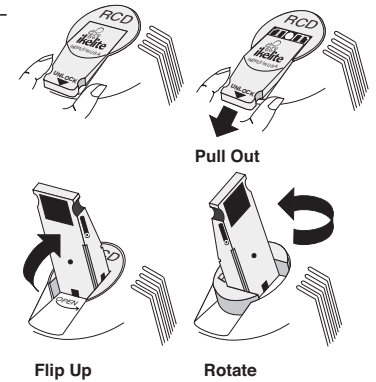
Note: Please read all instructions before using this product.

OPENING THE LIGHT

The unique flip-lock lever makes opening and closing incredibly easy and dependable.

Simply extend the locking lever, flip it up, and rotate. The internal spring automatically pushes open the light for easy bulb or battery replacement. Flip the locking lever down and the C-Lite 8 seals with ease and confidence.

- Place light face down on flat surface.
- Pull out on the locking lever.
- Flip the lever up.
- Rotate the lever counter-clockwise 90° and the internal spring automatically pushes the light open.
- Lift the body off of the front. The batteries remain housed in the holder.



O-RING

Keep the o-ring and sealing surfaces clean. DO NOT stretch the o-ring when cleaning. It is not necessary to lubricate the o-ring. Never use spray lubricant because it will crack the plastic.

Place the clean o-ring on the inner recess of the front head assembly.

Do not dent or damage the front edge of the lite body as the o-ring seals against this surface.

CLOSING THE LITE

- Make sure the on/off switch has been rotated left to the off position.
- Place the front lens face down on a flat surface. Check that the o-ring and sealing surfaces are clean and undamaged; make sure the o-ring is positioned properly on the inner recess of the front.
- Place locking lever in the open position (pull out, flip up, and rotate lever).
- Align the handle on the body with the handle reference on the battery holder. Lower the body over the batteries. Proper alignment of the body with the front is extremely important to avoid possible damage to the internal components.
- To seal the light, simply reverse the opening sequence. Press down slightly on the body and rotate the lever clockwise. Push the lever down and slide the lever in to the locked position.

ON/OFF SWITCH

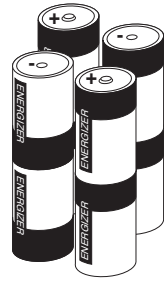
The large rotating switch with sliding lock is easily operated with one hand. Unlock the switch by sliding the white-colored lock down. Rotate the switch fully to the right to turn the light ON.

Rotate the switch to the left to turn the light OFF. To lock the switch, slide the white lock upward towards the light body. Lock the switch when the light is not in use.

BATTERY INSTALLATION

Accepts eight C-cell batteries, alkaline or NMHi. Alkaline batteries provide 15W initial intensity and 10 hours of high intensity light. Consumer ni-cads reduce intensity and burn time.

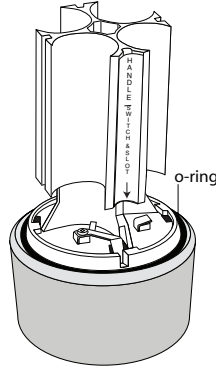
- Note the polarity markings at the base of the battery holder assembly.
- Follow the polarity markings when installing two batteries in each of the four columns. Make sure that both batteries in each column have the same polarity direction.



FOR BEST RESULTS, USE
QUALITY ALKALINE BATTERIES

CAUTION:

DO NOT use batteries that have been wet; batteries from a flooded lite should be discarded. Water could create an internal short circuit at some later date causing a potential explosion. The normal evolution of all batteries is emitting hydrogen gas. This gas must be absorbed or allowed to escape to prevent ignition of the entrapped hydrogen/air mixture. We suggest storage of your lite open to allow any hydrogen/air mixture to escape.



MAINTENANCE

1. We suggest storage of your lite with the locking lever OPEN to allow any potential hydrogen/air mixture to escape.
2. The front edge of the lite body and the inner recess in the front assembly are the sealing surfaces. DO NOT allow these surfaces to become damaged.
3. Keep the o-ring and sealing surfaces clean. DO NOT stretch the o-ring when cleaning. It is not necessary to lubricate the o-ring. Never use spray lubricant because it will cause cracking of the plastics.
4. Occasionally clean the metal contacts for a better connection.
5. The front head assembly has been factory sealed; DO NOT disassemble.

REPLACEMENT PARTS

0124	Main seal o-ring
0522	Rubber shroud

LED Bulbs

Due to the extended life expectancy of LED bulbs, the light head assembly has been factory sealed. If bulb failure does occur the light should be returned to Ikelite.

LED's Flicker

When the batteries are nearly depleted the light will flicker, if left on for a few minutes the flickering will stop, but each time the light is turned off and on the light will flicker. This is a good indication that the batteries should be replaced.

LIMITED WARRANTY

All Ikelite products are warranted against any manufacturing defects for a period of one year from the original date of purchase. Defective products should be returned prepaid to Ikelite. Ikelite will, at its discretion, repair or replace such products, and will return to customer prepaid. All other claims, of any nature, including but not limited to bulb failure are not covered. Except as mentioned above, no other warranty expressed or implied, applies to this Ikelite product.



IKELITE UNDERWATER SYSTEMS

50 West 33rd Street
PO Box 88100
Indianapolis, IN 46208 USA

317-923-4523

www.ikelite.com
Email ikelite@ikelite.com